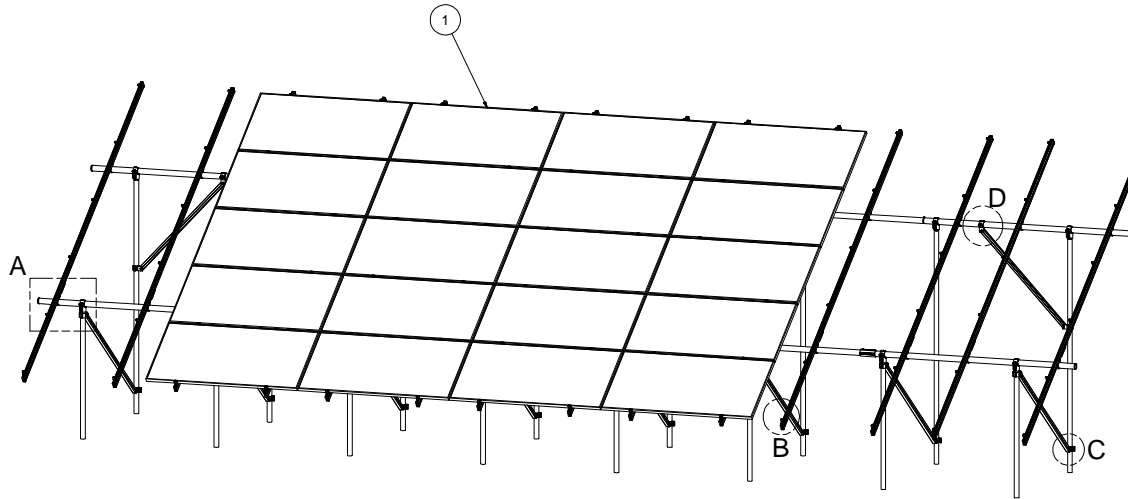


NOTES: UNLESS OTHERWISE SPECIFIED

- THIS DRAWING IS NOT FOR CONSTRUCTION UNTIL ENGINEERING HAS REVIEWED AND STAMPED THIS DOCUMENT.
- DIMENSIONS SHOWN ARE INCHES.
- THE SELF-BONDING SYSTEM AND SINGLE GROUND LUG IS FOR USE WITH PV MODULES THAT HAVE A MAXIMUM SERIES FUSE RATING OF 30A.
- MATERIALS ARE AS SPECIFIED OR EQUIVALENT:
HARDWARE: 304 STAINLESS STEEL
FABRICATED EXTRUDED PARTS: 6005-T5 ALUMINUM ALLOY
FABRICATED DIE CAST PARTS: ANSI/AA A380 ALUMINUM ALLOY
STEEL PIPE: SCHEDULE 40 GALVANIZED
ALUMINUM PIPE: SCHEDULE 10 ANODIZED
- THE MAXIMUM PERMISSIBLE LENGTH OF ANY STRUCTURE SHALL BE 200 FT. FOR SYSTEMS USING A SHARED RAIL CONFIGURATION, A THERMAL BREAK IS REQUIRED IN THE RAIL EVERY 40 FT. PER THE DRAWING DETAILS.
- 4LXN-3LXN-2PXM-30DEG-GSM-AGM-BGM-PGM.
- PANEL DIMENSIONS ARE AS FOLLOWS
STANDARD (SP): MAX 82"X42"
OVERSIZE (OP): MAX 85"X45"
- APPROVED RAIL PROFILES - STANDARD PANELS
A20288-XXX (HR300 RAIL), A20297-001 (END CAP), K10343-002 (U-CLAMP KIT), K10178-001 (RAIL SPLICE KIT), A20145-XXX (HR350 RAIL), A20285-001 (END CAP), K10343-001 (U-CLAMP KIT), K10177-001 (RAIL SPLICE KIT).
- APPROVED RAIL PROFILES - OVERSIZE PANELS
* A20288-XXX (HR300 RAIL), A20297-001 (END CAP), K10343-002 (U-CLAMP KIT), K10178-001 (RAIL SPLICE KIT), * A20145-XXX (HR350 RAIL), A20285-001 (END CAP), K10343-001 (U-CLAMP KIT), K10177-001 (RAIL SPLICE KIT).
- K10224-XXX END CLAMP KIT OR K10299-XXX ADJ. END CLAMP KIT.
- FOUNDATION TYPES:
GSM = GROUND SCREW GROUND MOUNT
AGM = HELICAL AUGER GROUND MOUNT
PGM = POST-IN-CONCRETE GROUND MOUNT
BSM = BALLAST GROUND MOUNT

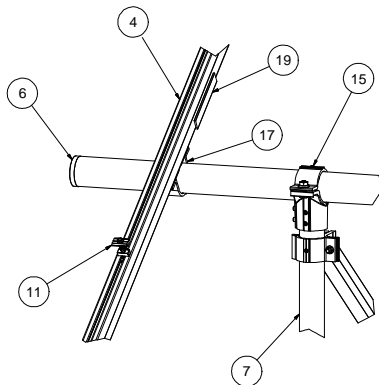


**5L
5-IN-LANDSCAPE**

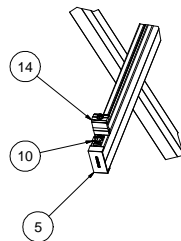


651 W. GALENA PARK BLVD. STE. 101 PHONE (801) 990-1775
DRAPER, UTAH 84020 WWW.VECTORSE.COM

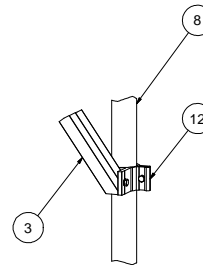
VECTOR PROJECT #: U2716.0319.211
MO FIRM LICENSE #: 2011009604
STRUCTURAL ONLY



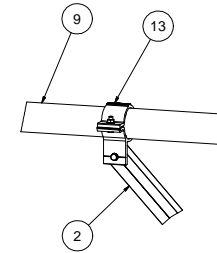
DETAIL A



DETAIL B



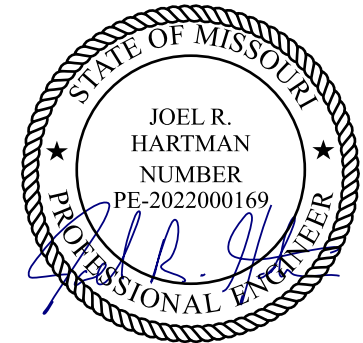
DETAIL C



DETAIL D

Packet B6

Model Code	ASCE 7-10
Exposure Category	C and Lower
Wind Speed	105 mph and Lower
Ground Snow Load	30 PSF and Lower
Tilt	30 DEG



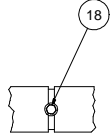
01/31/2023

19		RAIL SPLICE KIT VARIES PER NOTE 8 & 9	14
18	K10448-001	2.5" PIPE SPLICE KIT	4
17	K10343-001	2.5" AL PIPE U-CLAMP KIT	28
16	K10342-001	2.5" PIPE SPLICE KIT	4
15	K10341-001	2.5" PIPE TEE KIT	16
14	K10224-XXX	END CLAMP KIT WITH COLLAR	28
13	K10222-001	2.5" PIPE CLAMP KIT	2
12	K10219-001	2" AL PIPE CLAMP KIT	18
11	K10180-001	GROUNDING MID-CLAMP KIT WITH T COLLAR BOLT AND GROUNDING BASE	56
10	K10179-002	SELF-GROUNDING LUG KIT	7
9	A21168-XXX	PIPE, HSS, 2.875" OD X 12 GAUGE, L=XXX	10
8	A21165-XXX	PIPE, HSS, 2.375" OD X 12 GAUGE, L=XXX	8
7	A21165-XXX	PIPE, HSS, 2.375" OD X 12 GAUGE, L=XXX	8
6	A20380-001	2.5" PIPE END CAP	4
5		HELIO RAIL, VARIES PER NOTE 8 & 9	28
4		HELIO RAIL, VARIES PER NOTE 8 & 9	14
3	A20164-XXX	1.5X2 AL TUBE BRACE, L=XXX	8
2	A20164-XXX	1.5X2 AL TUBE BRACE, L=XXX	2
1		PANEL	35

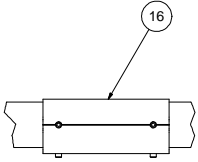
ITEM	PART NUMBER	DESCRIPTION	QTY
MATERIALS: SEE BOM THIRD ANGLE PROJECTION PERSONAL USE ONLY (NOT FOR REPRODUCTION) ALL DIMENSIONS UNLESS OTHERWISE SPECIFIED ARE IN INCHES UNLESS OTHERWISE SPECIFIED, DIMENSIONS ARE TO FACE FINISHES: UNLESS OTHERWISE SPECIFIED, ALL SURFACES ARE TO BE FINISHED TO A 16 MIL RMS SURFACE FINISH DATE: 08/26/2021 CHECKED BY:			
SunModo Corp. 14800 NE 65TH STREET, VANCOUVER WA 98682		TITLE: PACKET B6 DRAWING NUMBER:	
APPROVALS:		SCALE:	SHEET 1 of 4

NOTES:

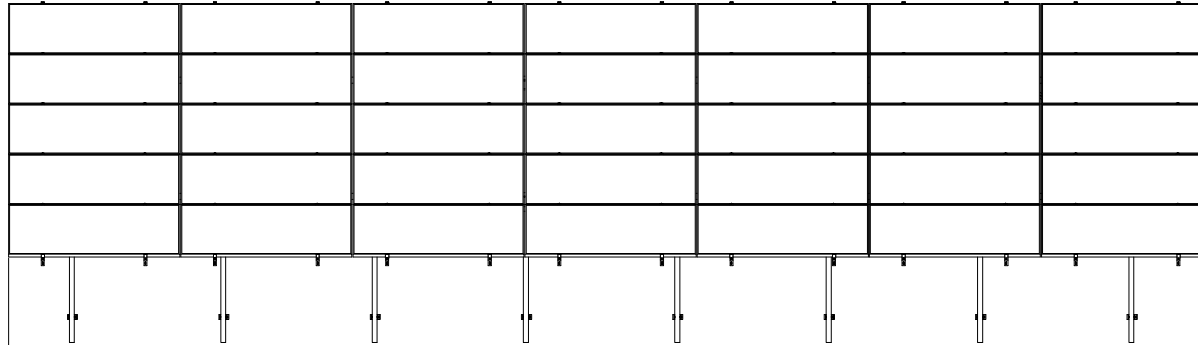
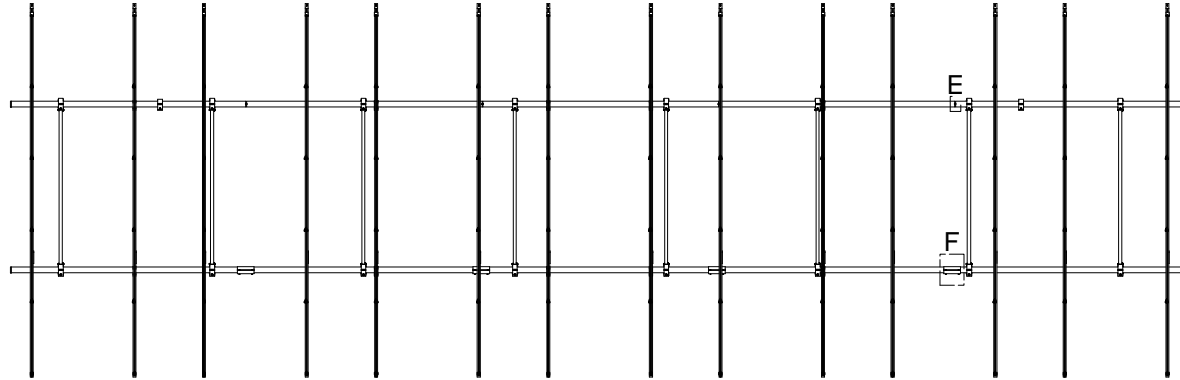
- 1. DIMENSIONS LABELED AS MAX ARE MAXIMUM ALLOWABLE AND MAY RESULT IN END POSTS BEING OUTSIDE ARRAY EDGES. MAXIMUM DIMENSIONS MAY BE REDUCED IF DESIRED.
- 2. SEE NOTE 7 OF COVER PAGE FOR PANEL SIZES.



DETAIL E



DETAIL F



22 MAX 66 MAX

5L
5-IN-LANDSCAPE



651 W. GALENA PARK BLVD. STE. 101 PHONE (801) 990-1775
DRAPER, UTAH 84020 WWW.VECTORSE.COM

VECTOR PROJECT #: U2716.0319.211
MO FIRM LICENSE #: 2011009604
STRUCTURAL ONLY



01/31/2023

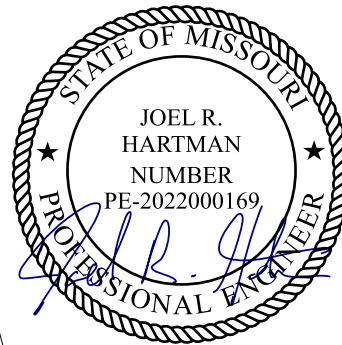
SunModo Corp.	
TITLE	PACKET B6
D	DRAWING NUMBER
SCALE:	SHEET 2 of 4 REV

DIMENSIONS - STA	
ITEM	5L
A	215
B	37
C	56
D	120

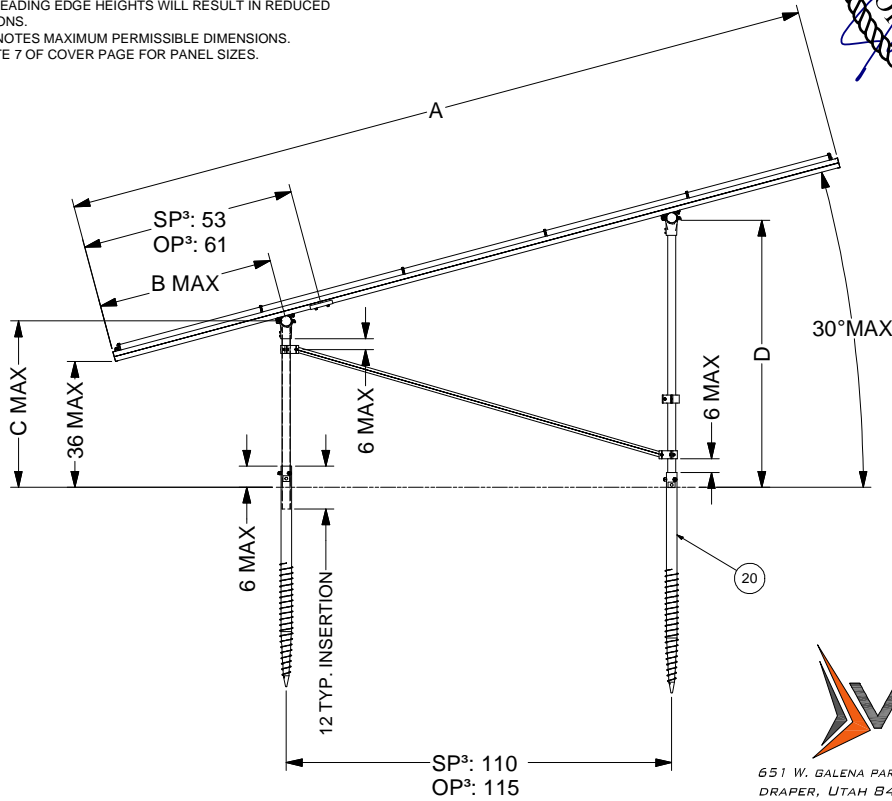
DIMENSIONS - OVER	
ITEM	5L
A	230
B	40
C	58
D	125

NOTES

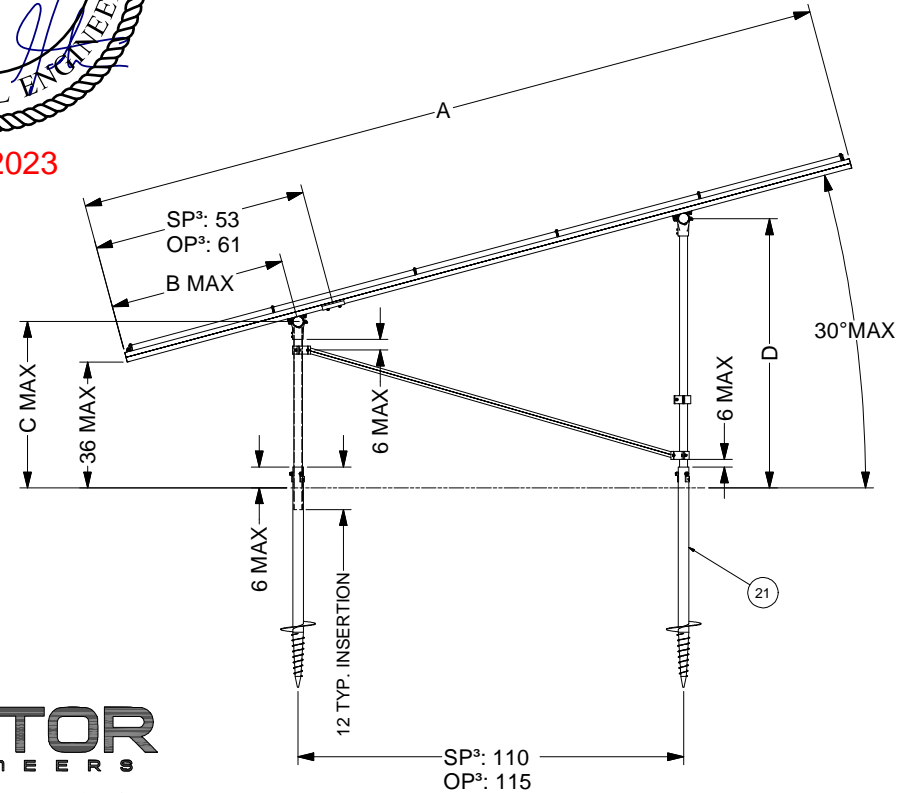
1. DIMENSIONS IN TABLE ARE SHOWN AT MAXIMUM TILT & LEADING EDGE HEIGHT. PROJECTS WITH LOWER TILTS & LEADING EDGE HEIGHTS WILL RESULT IN REDUCED DIMENSIONS.
2. MAX DENOTES MAXIMUM PERMISSIBLE DIMENSIONS.
3. SEE NOTE 7 OF COVER PAGE FOR PANEL SIZES.



01/31/2023



GROUND SCREW GROUND MOUNT (GSM)



AUGER GROUND MOUNT (AGM)

VECTOR ENGINEERS
 651 W. GALENA PARK BLVD. STE. 101 DRAPER, UTAH 84020 PHONE (801) 990-1775 WWW.VECTORSE.COM
VECTOR PROJECT #: U2716.0319.211
MO FIRM LICENSE #: 2011009604
STRUCTURAL ONLY

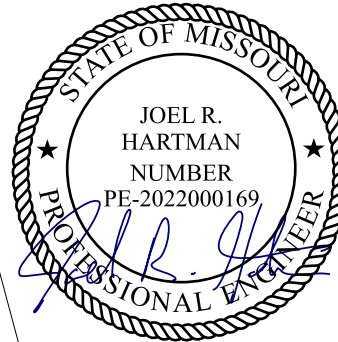
ITEM	PART NUMBER	DESCRIPTION	QTY
21	K10414-XXX	ANCHOR, 10" HELIX SCREW AUGER, L=XXX	
20	K10423-XXX	ANCHOR, SCREW AUGER KIT, L=XXX	
SunModo Corp.			
TITLE: PACKET B6			
D: DRAWING NUMBER			
SCALE:		SHEET 3 of 4	REV

DIMENSIONS - STA	
ITEM	5L
A	215
B	37
C	56
D	120

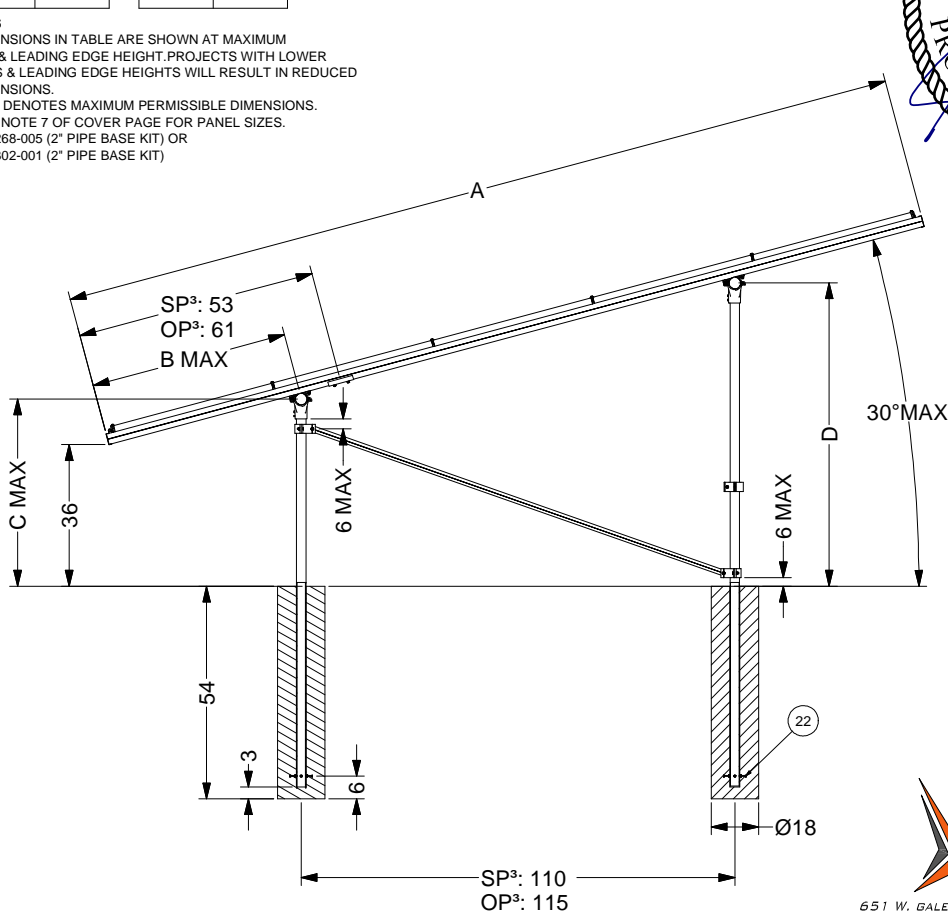
DIMENSIONS - OVER	
ITEM	5L
A	230
B	40
C	58
D	125

NOTES

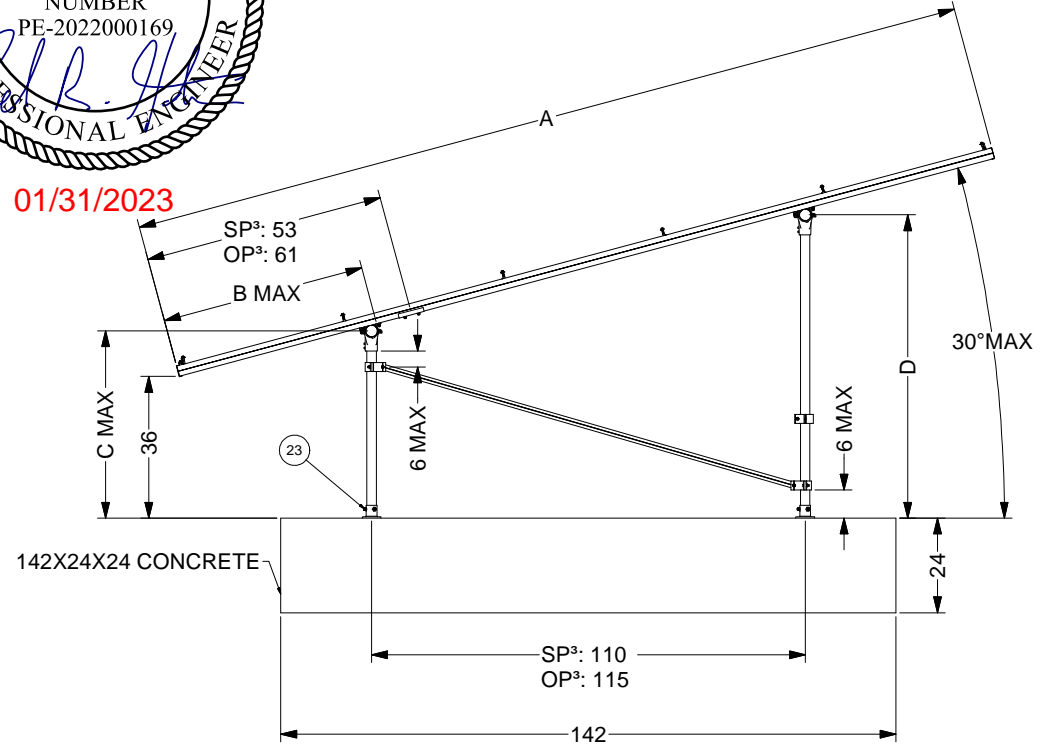
1. DIMENSIONS IN TABLE ARE SHOWN AT MAXIMUM TILT & LEADING EDGE HEIGHT. PROJECTS WITH LOWER TILTS & LEADING EDGE HEIGHTS WILL RESULT IN REDUCED DIMENSIONS.
2. MAX DENOTES MAXIMUM PERMISSIBLE DIMENSIONS.
3. SEE NOTE 7 OF COVER PAGE FOR PANEL SIZES.
4. K10268-005 (2" PIPE BASE KIT) OR K10302-001 (2" PIPE BASE KIT)



01/31/2023



POST-IN-CONCRETE GROUND MOUNT (PGM)



BALLAST GROUND MOUNT (BGM)



651 W. GALENA PARK BLVD. STE. 101 DRAPER, UTAH 84020 PHONE (801) 990-1775 WWW.VECTORSE.COM

VECTOR PROJECT #: U2716.0319.211

MO FIRM LICENSE #: 2011009604

STRUCTURAL ONLY

23		POST BASE. VARIES PER NOTE	
4			
22	K10186-001	EMBEDDED 2.0" PIPE CLAMP KIT	
ITEM	PART NUMBER	DESCRIPTION	QTY
SunModo Corp.			
TITLE: PACKET B6			
D DRAWING NUMBER			
SCALE: SHEET 4 of 4 REV			