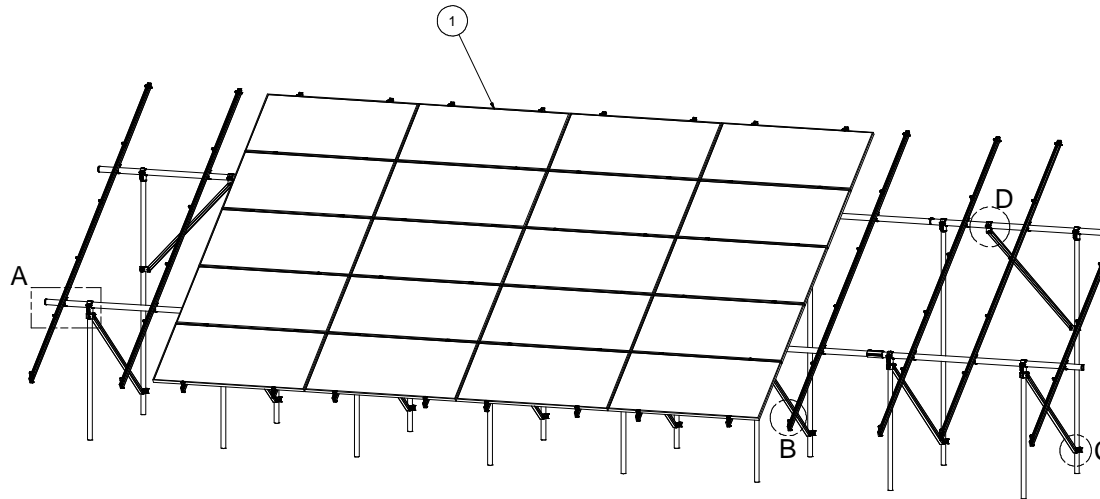


NOTES: UNLESS OTHERWISE SPECIFIED

1. THIS DRAWING IS NOT FOR CONSTRUCTION UNTIL ENGINEERING HAS REVIEWED AND STAMPED THIS DOCUMENT.
2. DIMENSIONS SHOWN ARE INCHES.
3. THE SELF-BONDING SYSTEM AND SINGLE GROUND LUG IS FOR USE WITH PV MODULES THAT HAVE A MAXIMUM SERIES FUSE RATING OF 30A.
4. MATERIALS ARE AS SPECIFIED OR EQUIVALENT:
HARDWARE: 304 STAINLESS STEEL
FABRICATED EXTRUDED PARTS: 6005-T5 ALUMINUM ALLOY
FABRICATED DIE CAST PARTS: ANSI/AA A380 ALUMINUM ALLOY
STEEL PIPE: SCHEDULE 40 GALVANIZED
ALUMINUM PIPE: SCHEDULE 10 ANODIZED
5. THE MAXIMUM PERMISSIBLE LENGTH OF ANY STRUCTURE SHALL BE 200 FT. FOR SYSTEMS USING A SHARED RAIL CONFIGURATION, A THERMAL BREAK IS REQUIRED IN THE RAIL EVERY 40 FT. PER THE DRAWING DETAILS.
6. 4LXN-3LXN-2PXN-30DEG-GSM-AGM-BGM-PGM.
7. PANEL DIMENSIONS ARE AS FOLLOWS
STANDARD (SP): MAX 82"X42"
OVERSIZE (OP): MAX 85"X45"
8. APPROVED RAIL PROFILES - STANDARD PANELS
A20288-XXX (HR300 RAIL), A20297-001 (END CAP), K10343-002 (U-CLAMP KIT);
A20145-XXX (HR350 RAIL), A20285-001 (END CAP), K10343-001 (U-CLAMP KIT).
9. APPROVED RAIL PROFILES - OVERSIZE PANELS
* A20288-XXX (HR300 RAIL), A20297-001 (END CAP), K10343-002 (U-CLAMP KIT);
* A20145-XXX (HR350 RAIL), A20285-001 (END CAP), K10343-001 (U-CLAMP KIT).
10. K10224-XXX END CLAMP KIT OR K10299-XXX ADJ. END CLAMP KIT.
11. FOUNDATION TYPES:
GSM = GROUND SCREW GROUND MOUNT
AGM = HELICAL AUGER GROUND MOUNT
PGM = POST-IN-CONCRETE GROUND MOUNT
BSM = BALLAST GROUND MOUNT



5L
5-IN-LANDSCAPE

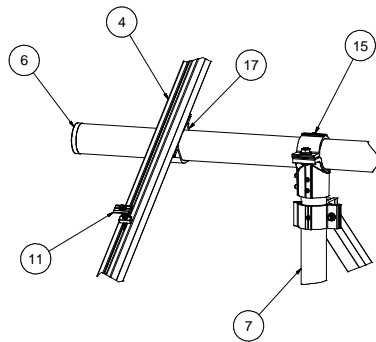
STRUCTURAL ONLY
VSE Project Number: U2716-0319-211

08/30/2021

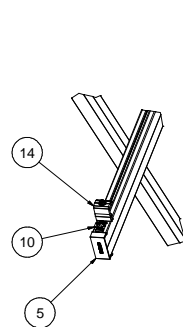
Packet B6	
Model Code	ASCE 7-10
Exposure Category	C and Lower
Wind Speed	105 mph and Lower
Ground Snow Load	30 PSF and Lower
Tilt	30 DEG



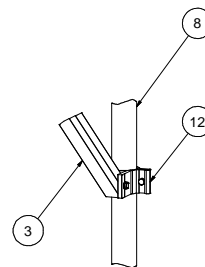
671 W. GALENA PARK BLVD. STE. 101 PHONE (801) 990-1775
TAPER, UTAH 84020 WWW.VECTORSE.COM



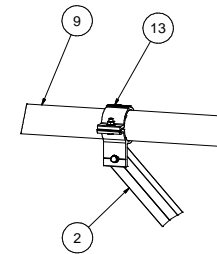
DETAIL A



DETAIL B



DETAIL C



DETAIL D

18	K10448-001	2.5" PIPE SPLICE KIT	4	
17	K10343-001	2.5" AL PIPE U-CLAMP KIT	28	
16	K10342-001	2.5" PIPE SPLICE KIT	4	
15	K10341-001	2.5" PIPE TEE KIT	16	
14	K10224-XXX	END CLAMP KIT WITH COLLAR	28	
13	K10222-001	2.5" PIPE CLAMP KIT	2	
12	K10219-001	2" AL PIPE CLAMP KIT	18	
11	K10180-001	GROUNDING MID-CLAMP KIT WITH T COLLAR BOLT AND GROUNDING BASE	56	
10	K10179-002	SELF-GROUNDING LUG KIT	7	
9	A21168-XXX	PIPE, HSS, 2.875" OD X 12 GAUGE, L=XXX	10	
8	A21165-XXX	PIPE, HSS, 2.375" OD X 12 GAUGE, L=XXX	8	
7	A21165-XXX	PIPE, HSS, 2.375" OD X 12 GAUGE, L=XXX	8	
6	A20380-001	2.5" PIPE END CAP	4	
5		HELIO RAIL, VARIES PER NOTE 8 & 9	28	
4		HELIO RAIL, VARIES PER NOTE 8 & 9	14	
3	A20164-XXX	1.5X2 AL TUBE BRACE, L=XXX	8	
2	A20164-XXX	1.5X2 AL TUBE BRACE, L=XXX	2	
1		PANEL	35	
ITEM		PART NUMBER	DESCRIPTION	QTY

SEE BOM

Third Angle Projection

PERSONAL USE ONLY (Not for Redistribution)

DATE: 08/26/2021

PHO

DESIGNED BY: D

APPROVALS

SCALE:

SHEET 1 of 4

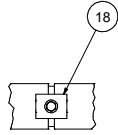
SunModo Corp.
14800 NE 65TH STREET, VANCOUVER WA 98682

TITLE: PACKET B6

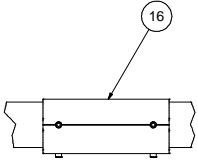
THIS DRAWING IS CONFIDENTIAL PROPERTY OF SUNMODO AND ITS CONTENTS MAY NOT BE DISCLOSED WITHOUT THE PRIOR WRITTEN CONSENT OF SUNMODO CORP.

NOTES:

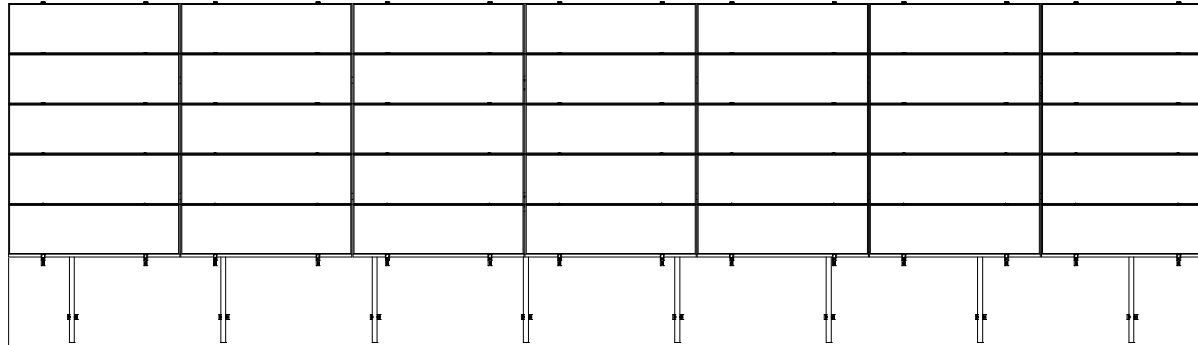
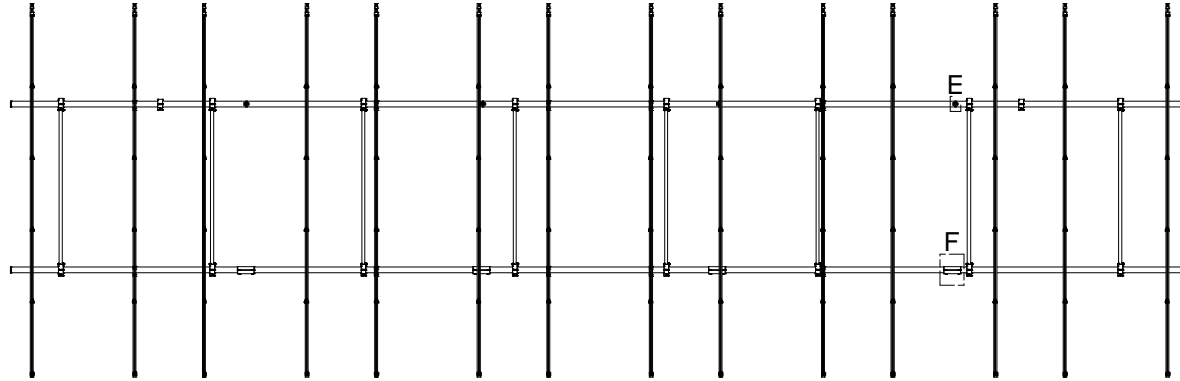
- 1. DIMENSIONS LABELED AS MAX ARE MAXIMUM ALLOWABLE AND MAY RESULT IN END POSTS BEING OUTSIDE ARRAY EDGES. MAXIMUM DIMENSIONS MAY BE REDUCED IF DESIRED.
- 2. SEE NOTE 7 OF COVER PAGE FOR PANEL SIZES.



DETAIL E



DETAIL F

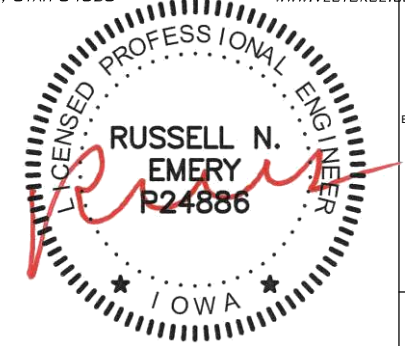


22 MAX ← → 66 MAX

5L
5-IN-LANDSCAPE



651 W. GALENA PARK BLVD, STE. 101 PHONE (801) 990-1775
DRAPER, UTAH 84020 WWW.VECTORSE.COM



08/30/2021
STRUCTURAL ONLY

VSE Project Number: U2716-0319-211

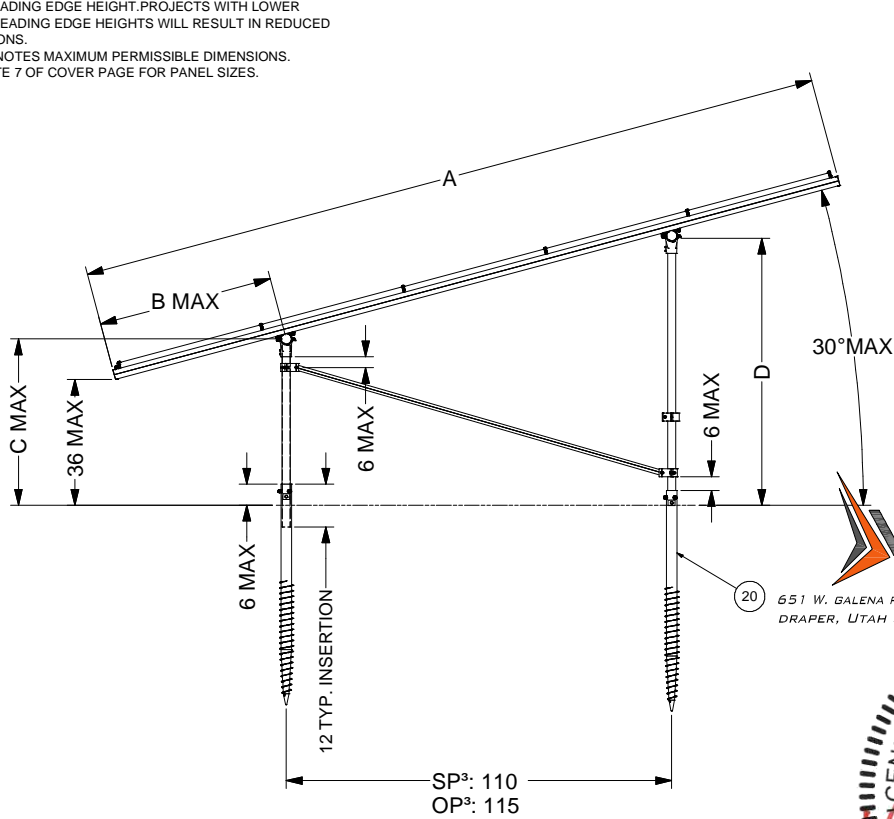
SunModo Corp.	
TITLE	PACKET B6
D	DRAWING NUMBER
SCALE:	SHEET 2 of 4 REV

DIMENSIONS - STA	
ITEM	5L
A	215
B	37
C	56
D	120

DIMENSIONS - OVER	
ITEM	5L
A	230
B	40
C	58
D	125

NOTES

1. DIMENSIONS IN TABLE ARE SHOWN AT MAXIMUM TILT & LEADING EDGE HEIGHT. PROJECTS WITH LOWER TILTS & LEADING EDGE HEIGHTS WILL RESULT IN REDUCED DIMENSIONS.
2. MAX DENOTES MAXIMUM PERMISSIBLE DIMENSIONS.
3. SEE NOTE 7 OF COVER PAGE FOR PANEL SIZES.



GROUND SCREW GROUND MOUNT (GSM)

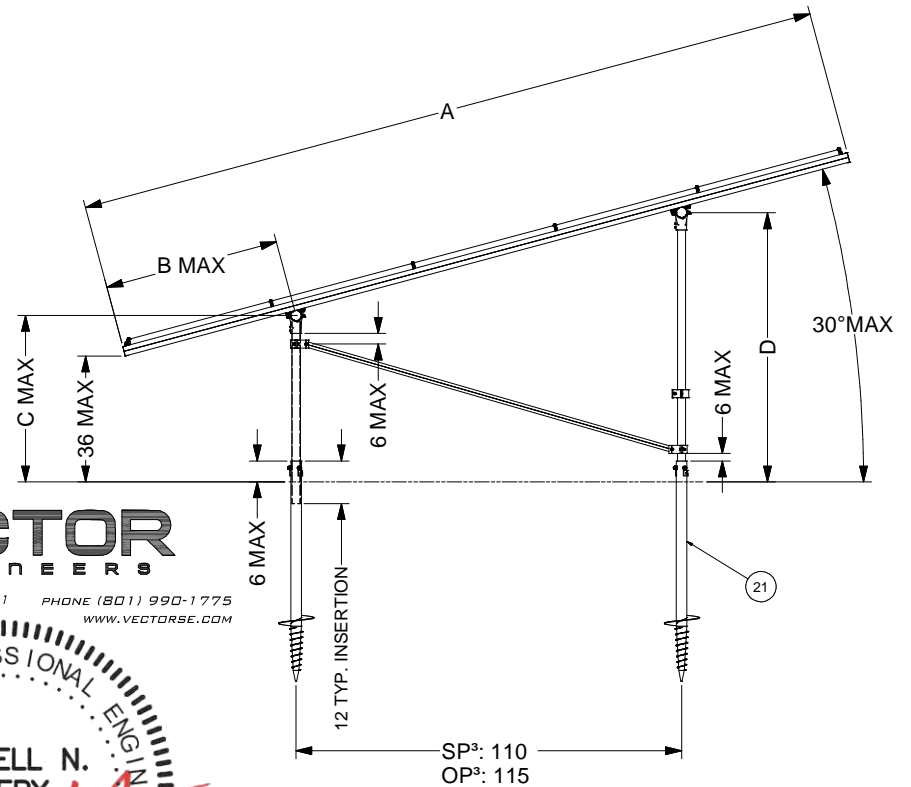
VECTOR ENGINEERS
 651 W. GALENA PARK BLVD. STE. 101 DRAPER, UTAH 84020
 PHONE (801) 990-1775 WWW.VECTORSE.COM



08/30/2021

STRUCTURAL ONLY

VSE Project Number: U2716-0319-211



AUGER GROUND MOUNT (AGM)

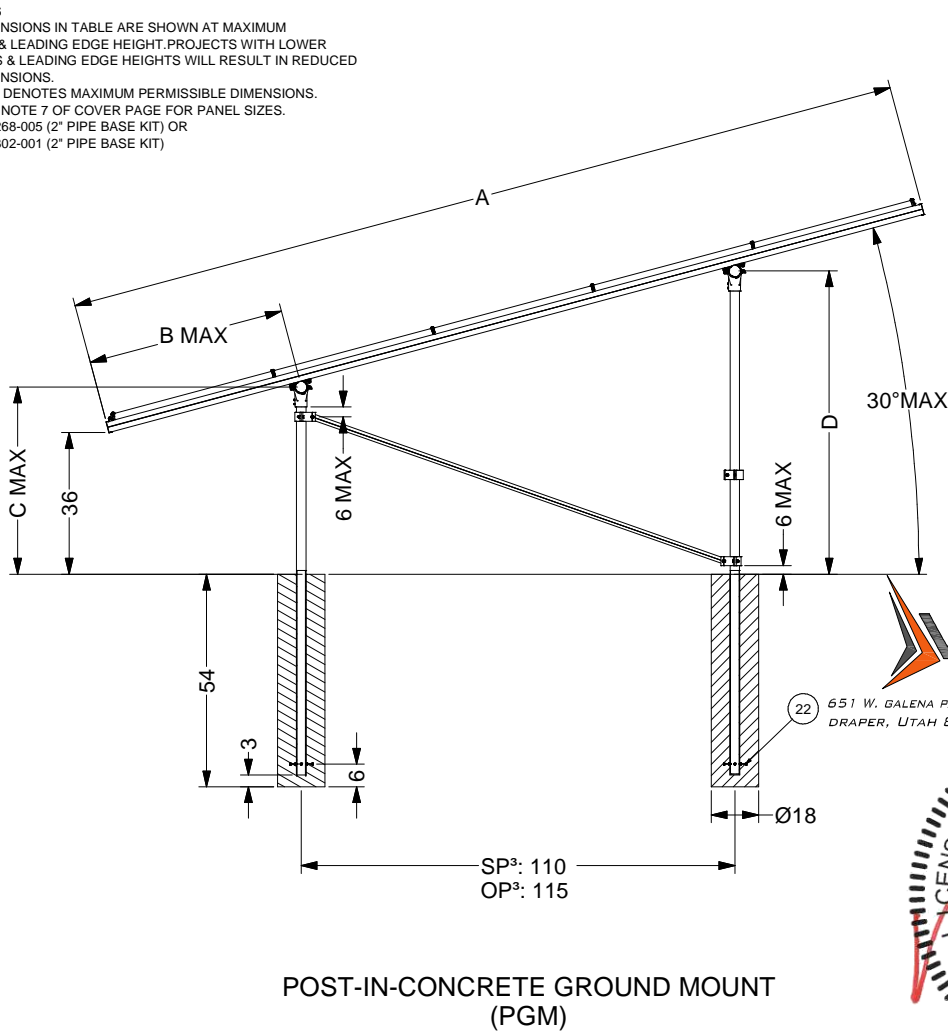
ITEM	PART NUMBER	DESCRIPTION	QTY
21	K10414-XXX	ANCHOR, 10" HELIX SCREW AUGER, L=XXX	
20	K10423-XXX	ANCHOR, SCREW AUGER KIT, L=XXX	
SunModo Corp.			
PACKET B6			
D DRAWING NUMBER			
SCALE: SHEET 3 of 4 REV			

DIMENSIONS - STA	
ITEM	5L
A	215
B	37
C	56
D	120

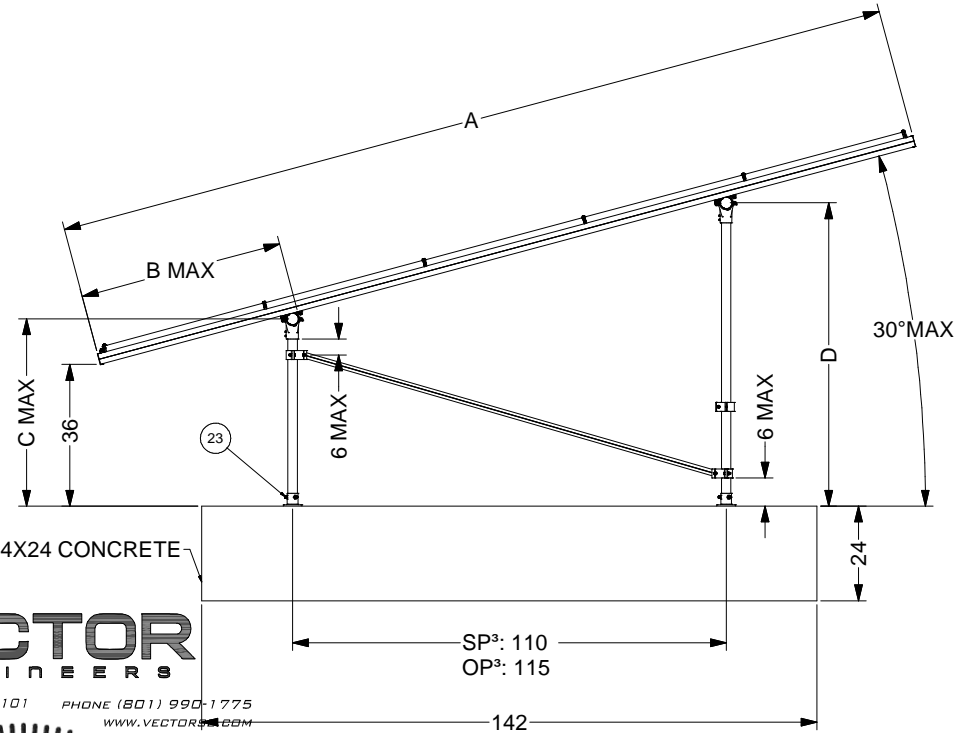
DIMENSIONS - OVER	
ITEM	5L
A	230
B	40
C	58
D	125

NOTES

1. DIMENSIONS IN TABLE ARE SHOWN AT MAXIMUM TILT & LEADING EDGE HEIGHT. PROJECTS WITH LOWER TILTS & LEADING EDGE HEIGHTS WILL RESULT IN REDUCED DIMENSIONS.
2. MAX DENOTES MAXIMUM PERMISSIBLE DIMENSIONS.
3. SEE NOTE 7 OF COVER PAGE FOR PANEL SIZES.
4. K10268-005 (2" PIPE BASE KIT) OR K10302-001 (2" PIPE BASE KIT)



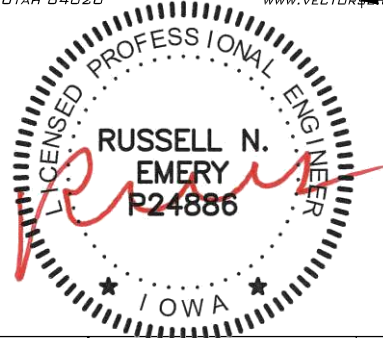
POST-IN-CONCRETE GROUND MOUNT (PGM)



BALLAST GROUND MOUNT (BGM)



651 W. GALENA PARK BLVD. STE. 101 DRAPER, UTAH 84020
 PHONE (801) 990-1775
 WWW.VECTORENG.COM



23		POST BASE. VARIES PER NOTE	
22	K10186-001	EMBEDDED 2.0" PIPE CLAMP KIT	
ITEM	PART NUMBER	DESCRIPTION	QTY
SunModo Corp.			
PACKET B6			
D			
SCALE: SHEET 4 of 4 REV			

08/30/2021
 STRUCTURAL ONLY

VSE Project Number: U2716-0319-211